

Tree Planting and Trimming Near Overhead Electrical Infrastructure

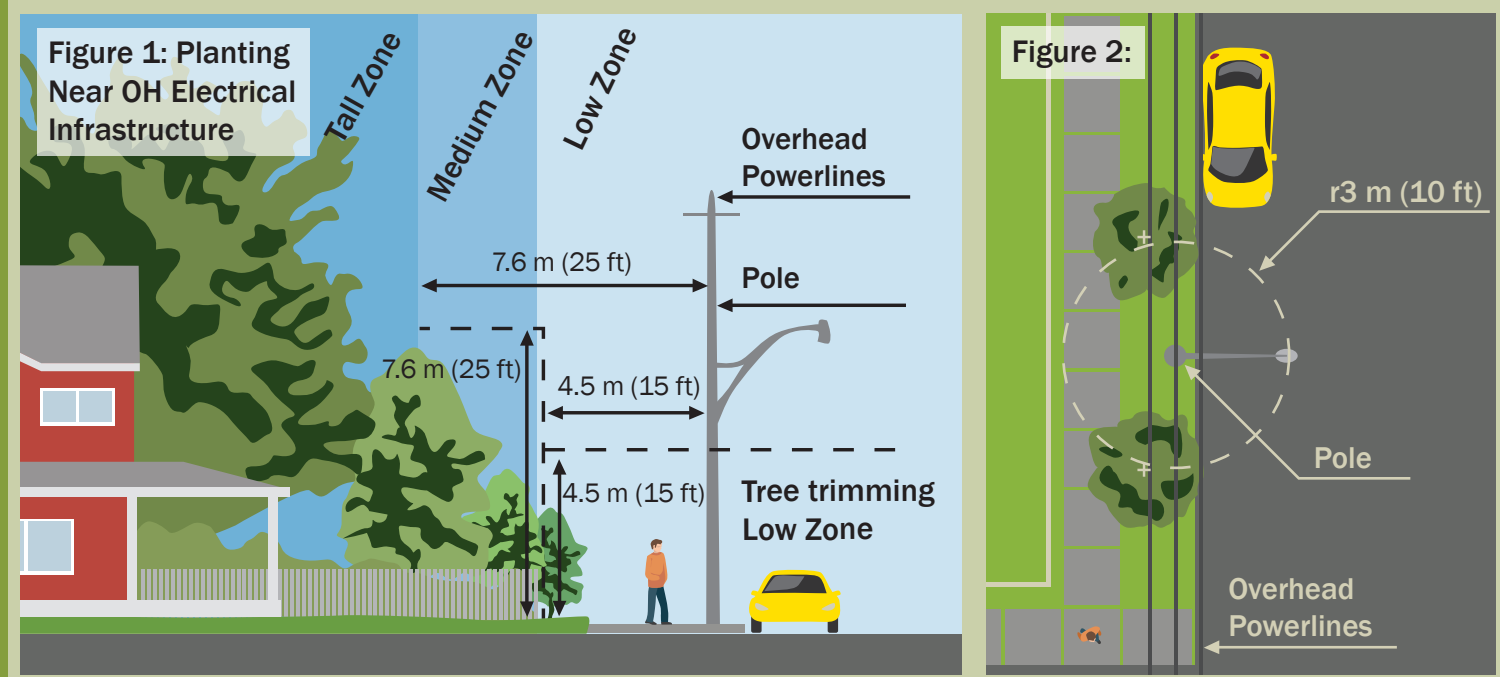
When trees, shrubs or vines are too close to the Overhead (OH) electrical infrastructure, there are potential hazards from branches and limbs such as fires, power outages, or line contacts. Vegetation may obscure views of OH electrical hazards. Trees, shrubs, and vines should be planted in accordance with **Figure 1**. Trees or vegetation in the Low Zone should not be placed closer than 3 m (10 ft) as per **Figure 2**.

When selecting trees for planting, it is important to consider that different varieties grow at different rates and those that grow faster will need to be trimmed more often, or be planted farther from OH electrical infrastructure.

For more information refer to ESA's "Planting Under or Around Powerlines & Electrical Equipment" guideline, and "Guidelines for Vegetation Management Around Powerlines".

As shown in **Figure 1**, the following tree planting zones apply:

Low Zone	Trees and shrubs planted under the electrical lines should have a maximum mature height and spread of 4.5 m (15 ft).
Medium Zone	The maximum mature height and spread of trees planted from the outer edge of the Low Zone in all directions, measuring 7.6 m (25 ft) from OH lines.
Tall Zone	Extends from the outer edge of the Medium Zone, and measures 7.6 m (25 ft) from the OH lines. At maturity, trees planted in this zone should not encroach on the Medium Zone.



Tree Trimming

A tree that grows too close to the OH electrical lines will need to maintain a safe clearance of 3 m (10 ft). Tree trimming near power infrastructure must be completed by qualified utility arborists.

Should any property owner need to do work near the OH electrical infrastructure and these distances cannot be met, they must contact Greater Sudbury Hydro to discuss solutions.

Underground Clearance

When planting in the vicinity of Underground (UG) electrical infrastructure, the minimum clearance required from the edge of the root ball to the edge of the UG cables is 1 m (3 ft). This protects the electrical infrastructure, and reduces damage to the roots of the trees should Greater Sudbury Hydro need to access its equipment. If the minimum distance cannot be achieved, Greater Sudbury Hydro may require the installation of a root deflector against the root ball.

Locates

UG electrical infrastructure may be buried at different depths. When planting a tree, a locate must be requested before digging.

Request a locate
Ontario One Call
1-800-400-2255
www.ontarioonecall.ca

Excavation

Tree planting and removal can involve deep excavation that has the potential to cause damage to nearby electrical structures. Electrical infrastructure must be protected from damage. Excavation within 1 m (3 ft) shall be completed using methods approved by Greater Sudbury Hydro.

